



**243 Cashmere Drive, Andover, SP11 6ZS**  
**Asking Price £260,000**





243 Cashmere Drive, Andover,  
Asking Price £260,000

## PROPERTY DESCRIPTION BY Miss Molly Scruton

A Modern Two-Bedroom Detached Coach House – Andover, Hampshire

Built in 2023 by Taylor Wimpey Homes, this beautifully presented two-bedroom detached coach house is located on the sought-after northern side of Andover. The property benefits from the remainder of its 10-year NHBC warranty, offering peace of mind and modern, efficient living. The accommodation is light and spacious throughout, featuring a contemporary open-plan, air-conditioned kitchen/living area that creates the perfect social space, with French doors leading to a private balcony. A study area provides an ideal spot for home working. There are two generous double bedrooms, including a principal bedroom fitted with air-conditioning, with en-suite shower room, complemented by a stylish family bathroom. Further benefits include gas central heating, a garage with parking to the rear, and modern fixtures and finishes throughout. Situated within easy reach of local amenities, schools, and transport links, this superb home is ideal for first-time buyers, professionals, or downsizers seeking a stylish and low-maintenance property.





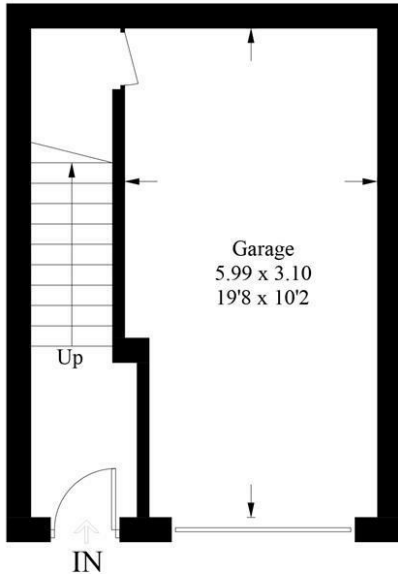
Augusta Park has history woven into its fabric with old flint farm walls from East Anton's time as farmland forming part of a major regeneration programme to this already well-established and bustling Hampshire town. This is an area with its own rich history. Andover is the location of a major crossing point of two important Roman roads: the Portway from Winchester to Marlborough, and the Icknield Way, which runs past Augusta Park on its way between Salisbury and Silchester. The actual site of the crossroads is very close to the development, but excavations in 1970, while revealing many Roman remains, failed to find the exact location. Now the area is a growing and welcoming community with a community centre, sports pavilion and the Endeavour Primary School already open, together with planned shops and village 'local area'. You will feel you belong from the start in a home tailored to modern living set amongst acres of beautifully landscaped open spaces, parks and play areas. Not wanting to travel too far for groceries? Then the brand new Co-op opened in April 2018 is on the doorstep located in East Anton Farm Road, along with the recently opened pizza takeaway for those not wanting to cook. Please note that as with most modern housing developments, this property may have a minimal yearly "estate charge". Please ask for further information.



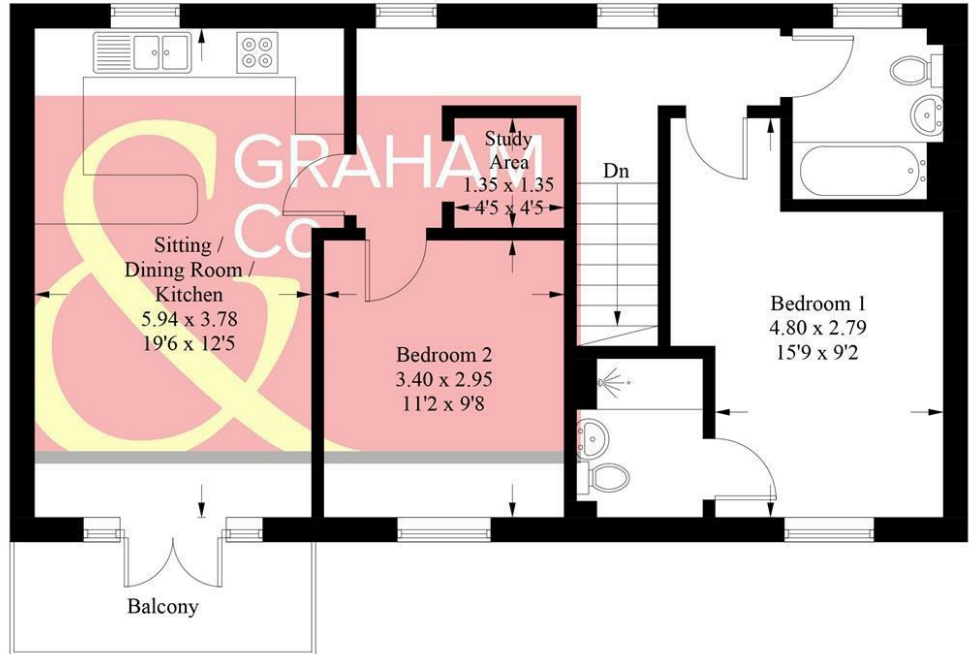


## Cashmere Drive, SP11

Approximate Gross Internal Area = 92.7 sq m / 998 sq ft  
(Including Garage)



**Ground Floor**



**First Floor**

### PRODUCED FOR GRAHAM AND CO

Whilst every attempt has been made to ensure the accuracy of the floorplan, measurements of doors, windows and rooms are approximate. These plans are for representation purposes only as defined by RICS Code of Measuring Practice and used as such by any prospective purchaser. © Emzo Marketing (ID1232366)

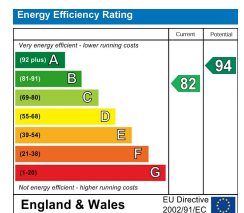
## MORTGAGE ADVICE

### Across The Market Mortgages

An independent Mortgage brokerage offering expert advice from across the whole market. Whether you are a first-time buyer, home mover, remortgaging or buying a Buy-To-Let investment. Tristan can provide expert & reliable advice, in a clear jargon free language. Book a free consultation today.

E - [tristan@atmmortgages.com](mailto:tristan@atmmortgages.com) M - 07545320380

[www.atmmortgages.com](http://www.atmmortgages.com)



**Tax Band: B**



**OPEN 7 DAYS**

If you are considering selling your home  
please contact us today for your free  
no obligation valuation

**01264 356500**

IMPORTANT: we would like to inform prospective purchasers that these sales particulars have been prepared as a general guide only. A detailed survey has not been carried out, nor the services, appliances and fittings tested. Room sizes should not be relied upon for furnishing purposes and are approximate. If floor plans are included, they are for guidance only and illustration purposes only and may not be to scale. If there are any important matters likely to affect your decision to buy, please contact us before viewing the property.